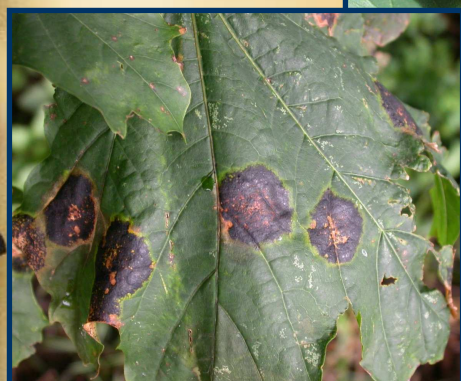


Least

WANTED



Tar Spots



Norway Maple

Acer platanoides

Unwanted for: Forming dense stands and out-competing native vegetation, including sugar maples. Releasing chemicals into soil that prevents other plants from growing.

Plant Type: A tree with grayish bark, milky sap and broad, green leaves, though there are maroon varieties. The common tar spot disease causes recognizable black spots on leaves.

What you can do:

- Hand pull young seedlings.
- Mow areas dominated by seedlings, cut more mature trees.
- Apply herbicide to cut stumps.

Photos: T. Hsiang, Univ. of Guelph, P. Wray, IA State Univ., L. Mehrhoff, Univ. of CT, Bugwood.org

For more info & control options contact:
Westfield River Invasive Species Partnership
wrwisp@gmail.com, 413-628-4485

Apprehend this plant carefully, it may be mistaken for others!

Westfield River
Watershed
Invasive Species
Partnership (WISP)

