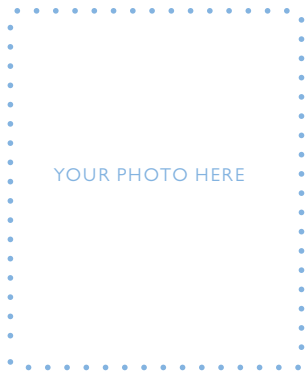


# QUEST DETECTIVE



THE TRUSTEES OF RESERVATIONS

# BE A QUEST DETECTIVE!



---

DETECTIVE NAME

---

CITY, STATE

AGE

---

FAVORITE COLOR

---

FAVORITE BUG

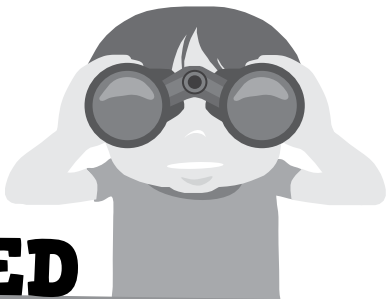
---

FAVORITE ANIMAL

---

FAVORITE SEASON

# GET STARTED



Up in the air and down on the ground  
There is sleuthing to do and clues to be found.  
Use the hints in the Quest to follow the map;  
If you use your five senses, it'll be a snap.  
At the end of the road, where do you look?  
There's a box on each Quest, with a stamp for your book.  
You'll have a good time – maybe even a blast...  
Using clues from the land, both present and past!



## **How does it work?**

Get out and explore cool places with these 12 special Quests. Find the Quest maps at each property, or download them online at: **[thetrustees.org/detective](http://thetrustees.org/detective)**. Directions to the Quests are included.

# YOUR QUESTS

## **Northeast Massachusetts**

Appleton Farmstead Quest, Hamilton & Ipswich PG. 4

Griffin's Perch Quest, Castle Hill on the Crane Estate, Ipswich PG. 5

Pinnacle Quest, Appleton Farms Grass Rides, Hamilton PG. 6

Hermit's Haven Quest, Ravenswood Park, Gloucester PG. 7

Sweetbay Swamp Quest, Ravenswood Park, Gloucester PG. 8

## **Greater Boston**

Over the Bridge & Through the Years Quest, Walpole PG. 9

Eleanor's Quest for a Special Place, Canton PG. 10

## **Southeast Massachusetts**

East Over Quest, Rochester PG. 11

## **Cape Cod & the Islands**

Menemsha Hills Quest, Chilmark, Martha's Vineyard PG. 12

## **Pioneer Valley**

Downtown Holyoke Quest, Holyoke PG. 13

## **Berkshires**

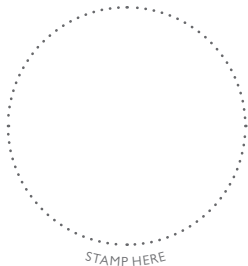
Bart's Cobble Quest, Sheffield PG. 14

In Search of the Mohicans Quest, Stockbridge PG. 15



# APPLETON FARMSTEAD QUEST

---



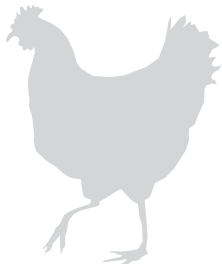
Check out Appleton Farms, America's oldest working farm, in Ipswich and Hamilton – meet cows, chickens, lots of wildlife, and check out the veggies growing in the fields!

## **BONUS:**

See a newborn calf!

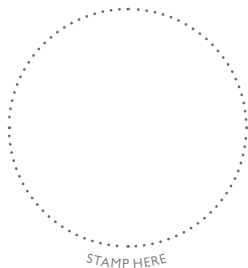
## **GETTING THERE:**

Appleton Farms  
Waldingfield Road  
Parking lot off of Rt. 1A in Ipswich  
Ipswich, MA 01982  
Telephone: 978.356.5728



# GRIFFIN'S PERCH QUEST

---



Visit the Crane “summer cottage” on the hill – a huge and historic mansion overlooking Crane Beach.

## **BONUS:**

Spy wild turkeys and deer wandering the trails and Allée.

## **GETTING THERE:**

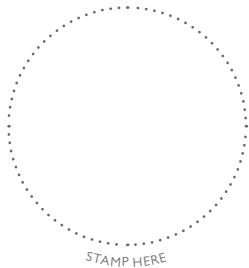
Castle Hill on the Crane Estate

290 Argilla Road

Ipswich, MA 01938

Telephone: 978.356.4351





# PINNACLE QUEST

---

Giddyup: originally designed for horseback riding and carriage driving, the Grass Rides has five miles of wide paths bordered by woods, plus open fields and wetlands. Dog walkers are welcome, as part of our Green Dogs program (visit [www.thetrustees.org/greendogs](http://www.thetrustees.org/greendogs) for info).

## **BONUS:**

Find a granite pinnacle on the property!

## **GETTING THERE:**

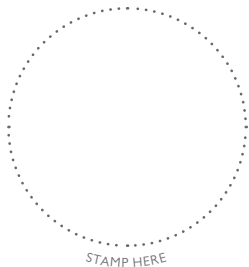
Appleton Farms Grass Rides  
Highland Street parking lot  
is off of Rte 1A  
Hamilton, MA 01982





# HERMIT'S HAVEN QUEST

---



Trek to Ravenswood Park in Gloucester to wander through shady hemlock groves, carriage paths, and a hike that overlooks scenic Gloucester Harbor.

## **BONUS:**

Find a fox's secret den along your journey!

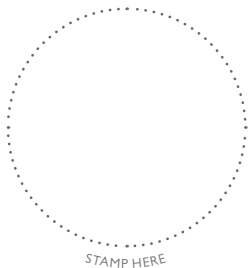
## **GETTING THERE:**

Ravenswood Park  
481 Western Avenue (Route 127)  
Gloucester, MA 01930  
Telephone: 978.526.8687



# SWEETBAY SWAMP QUEST

---



Dig even deeper into Ravenswood Park and discover Sweetbay magnolias and clues to colonial civilization, plus plenty of places to bird watch.

## **BONUS:**

Keep an eye out for Balance Rock (you'll know it when you see it) – and wander along a super cool boardwalk!

## **GETTING THERE:**

Ravenswood Park  
481 Western Avenue (Route 127)  
Gloucester, MA 01930  
Telephone: 978.526.8687



# MAP



## LEGEND

Quest Locations



Reservations

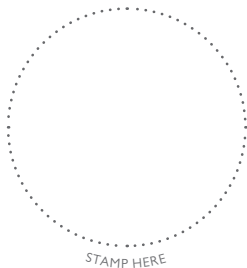


# THE TRUSTEES OF RESERVATIONS



# OVER THE BRIDGE AND THROUGH THE YEARS QUEST

---



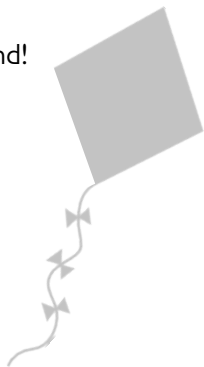
Venture to Francis William Bird Park in Walpole for lots of shade trees, rolling fields for play and picnics, and meadows filled with butterflies in summer.

## **BONUS:**

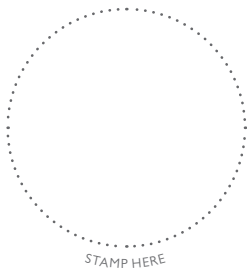
Play at (and on!) the brand-new playground!

## **GETTING THERE:**

Francis William Bird Park  
Washington Street  
East Walpole, MA 02032  
Telephone: 508.668.6136



# ELEANOR'S QUEST FOR A SPECIAL PLACE



Bradley Estate in Canton is a small working farm with 3 miles of cart paths through the woods, beautiful gardens, and a farm stand stocked with fresh veggies in summer.

## **BONUS:**

Visit the llamas, sheep, and chickens who call this former farm home in the summer!

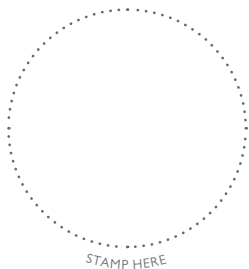
## **GETTING THERE:**

Eleanor Cabot Bradley Estate  
2468B Washington Street (Route 138)  
Canton, MA 02021  
Telephone: 781.821.2996



# EAST OVER QUEST

---



Roll over to East Over to ramble in rolling hayfields, and peek into vernal pools. Be on the lookout for birds, butterflies, and cottontail rabbits.

## **BONUS:**

Scream for ice cream right next door at Eastover Farm!

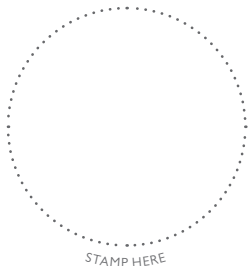
## **GETTING THERE:**

East Over Reservation  
Clapp Road  
Rochester, MA 02770  
Telephone: 508.636.4693



# MENEMSHA HILLS QUEST

---



Mosey to Menemsha Hills on Martha's Vineyard to climb to the second highest point on the island, with wetlands, woodlands, and awesome ocean views.

## **BONUS:**

Look for seals, seagulls, and osprey!

## **GETTING THERE:**

Menemsha Hills

North Road

Chilmark, MA 02535

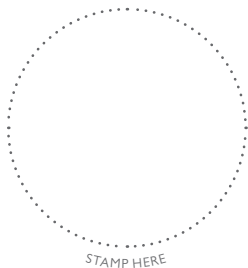
Telephone: 508.693.3678





# DOWNTOWN HOLYOKE QUEST

---



Discover Downtown Holyoke (“Paper City”) with its cool central canal system, historic Opera House and brick mill buildings, and Children’s Museum.

## **BONUS:**

Keep your eyes peeled for a “Sword Fence”!

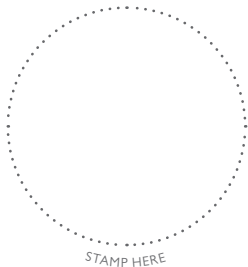
## **GETTING THERE:**

The Trustees of Reservations  
193 High Street  
Holyoke, MA 01040



# BART'S COBBLE QUEST

---



Bartholomew's Cobble has twin rocky knolls, super mountain views, fragrant freshwater marshes, and one of the largest cottonwood trees in the state.

## **BONUS:**

Explore two small caves!

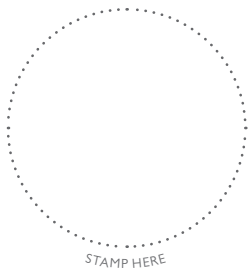
## **GETTING THERE:**

Bartholomew's Cobble  
105 Weatogue Road  
Ashley Falls  
Sheffield, MA 01257  
Telephone: 413.229.8600



# IN SEARCH OF THE MOHICANS QUEST

---



Located on Main Street, this National Historic Landmark was home to the first missionary to the Mohican tribe. Amazing fact: this house was completely taken apart, then moved in the late 1920's.

## **BONUS:**

See an exact replica of an old cobbler shop!

## **GETTING THERE:**

Mission House  
19 Main Street  
Stockbridge, MA 01262  
Telephone: 413.298.3239



# I SPY...TRACKS!

---

Keep your eyes open for tracks on your Quest...



WHITE-TAILED DEER



RACCOON



WILD TURKEY



COYOTE

(Not drawn to scale.)

# I SPY...BUGS!

---

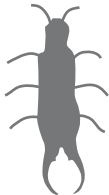
Keep your eyes open for bugs on your Quest...



DRAGONFLY



LADY BUG



EARWIG



GRASSHOPPER



WORKER ANT

(Not drawn to scale.)

# I SPY...LEAVES!

---

Keep your eyes open for leaves on your Quest...



OAK



RED MAPLE



HOLLY



WHITE PINE

(Not drawn to scale.)



# Did you have fun?

Go to [thetrustees.org/detective](https://thetrustees.org/detective)  
to tell us all about it!

For more fun events near you – and membership  
info, too – visit [thetrustees.org](https://thetrustees.org)!



Visit **all** of our fun places in  
Massachusetts – more than  
100 farms, fields, trails,  
mountains & beaches!



[www.thetrustees.org](http://www.thetrustees.org)