

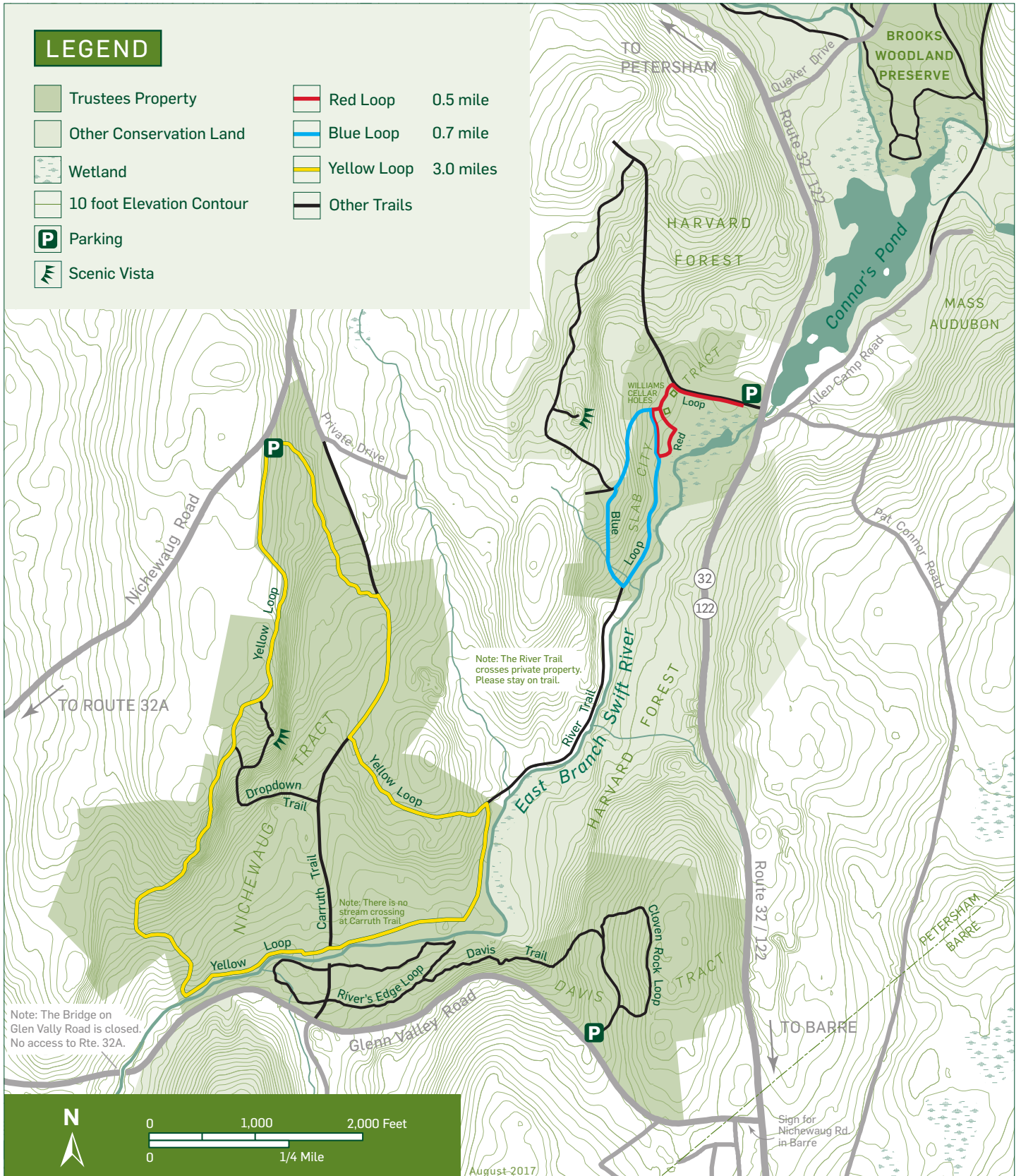


SWIFT RIVER RESERVATION (439 ACRES)

Route 32 / 122 ▪ Nichewaug Road ▪ Glen Vally Road ▪ Petersham, MA
 413.532.1631 ▪ central@ttor.org ▪ www.thetrustees.org

LEGEND

- | | | | | |
|--|---------------------------|--|--------------|-----------|
| | Trustees Property | | Red Loop | 0.5 mile |
| | Other Conservation Land | | Blue Loop | 0.7 mile |
| | Wetland | | Yellow Loop | 3.0 miles |
| | 10 foot Elevation Contour | | Other Trails | |
| | Parking | | | |
| | Scenic Vista | | | |



Source data obtained from USGS topographic maps, field surveys, Global Positioning System (GPS), and data provided by MassGIS. Boundary lines and trail locations are approximate. This map is a product of the Geographic Information System of The Trustees of Reservations, August 2017.