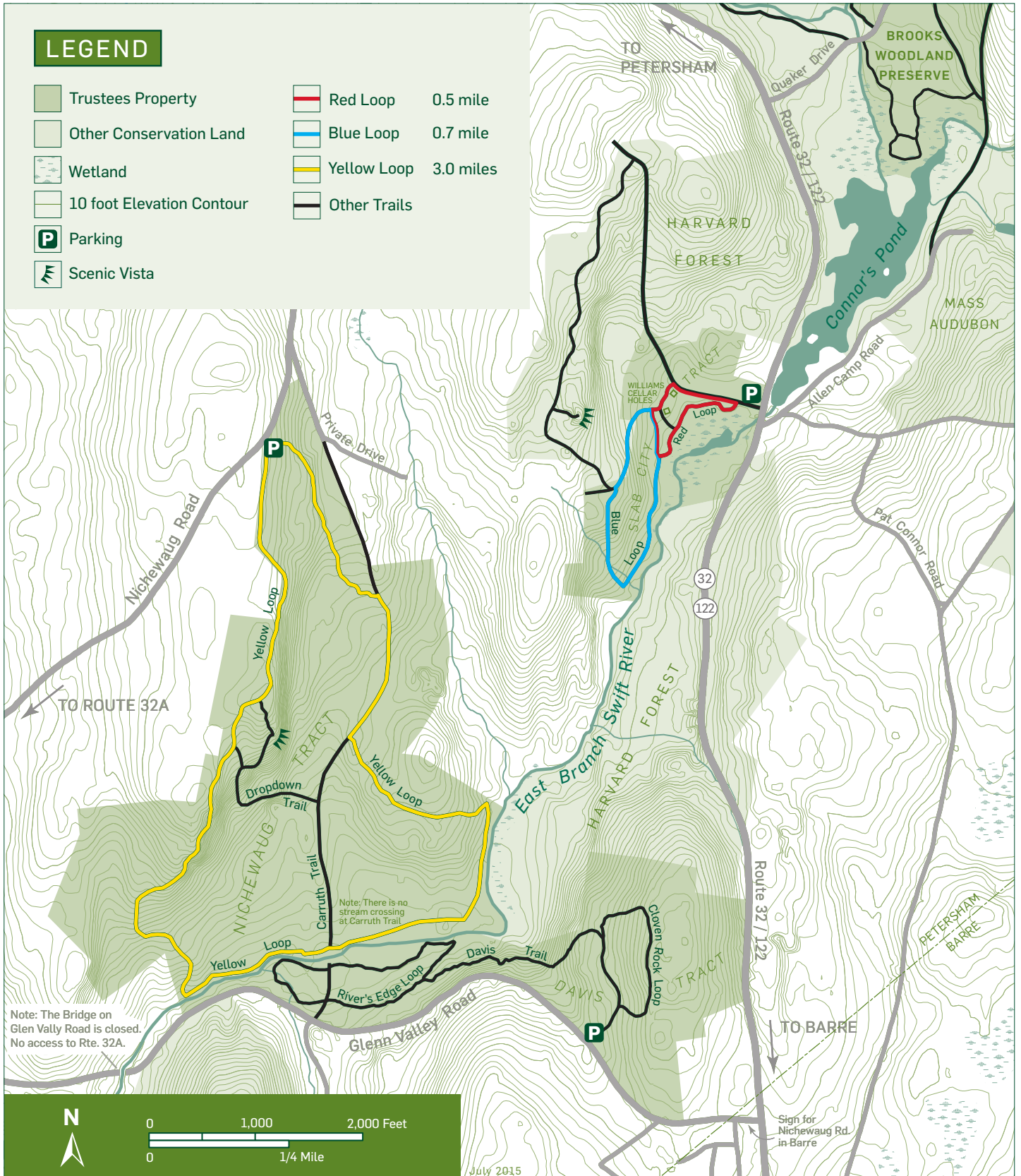




SWIFT RIVER RESERVATION (439 ACRES)

Route 32 / 122 ■ Nichewaug Road ■ Glen Vally Road ■ Petersham, MA
413.532.1631 ■ central@ttor.org ■ www.thetrustees.org



Source data obtained from USGS topographic maps, field surveys, Global Positioning System (GPS), and data provided by MassGIS. Boundary lines and trail locations are approximate. This map is a product of the Geographic Information System of The Trustees of Reservations, July 2015.