



# ROCKY NARROWS

(274 ACRES)

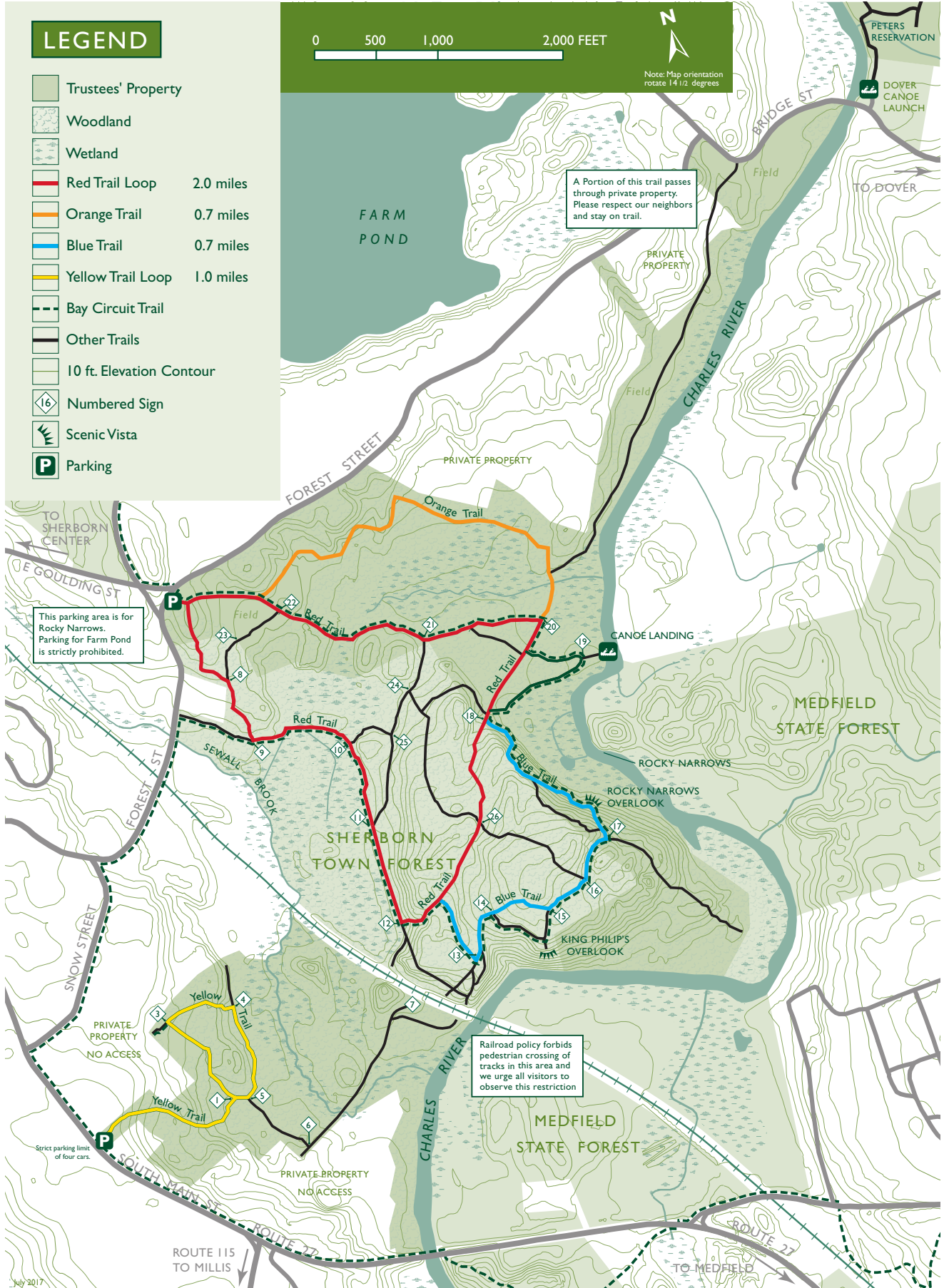
South Main Street (Rte 27) and Forest Street ▪ Sherborn, Massachusetts

508.785.0339 ▪ charlesrivervalley@thetrustees.org ▪ www.thetrustees.org

## LEGEND

- Trustees' Property
- Woodland
- Wetland
- Red Trail Loop 2.0 miles
- Orange Trail 0.7 miles
- Blue Trail 0.7 miles
- Yellow Trail Loop 1.0 miles
- Bay Circuit Trail
- Other Trails
- 10 ft. Elevation Contour
- Numbered Sign
- Scenic Vista
- Parking

0 500 1,000 2,000 FEET



This parking area is for Rocky Narrows. Parking for Farm Pond is strictly prohibited.

A portion of this trail passes through private property. Please respect our neighbors and stay on trail.

Railroad policy forbids pedestrian crossing of tracks in this area and we urge all visitors to observe this restriction

This map is a product of the Geographic Information System of The Trustees of Reservations. Source data obtained from 1:25,000 scale USGS topographic maps, field surveys, Global Positioning System (GPS), and MassGIS. Boundary lines and trail locations are approximate. July 2017.