



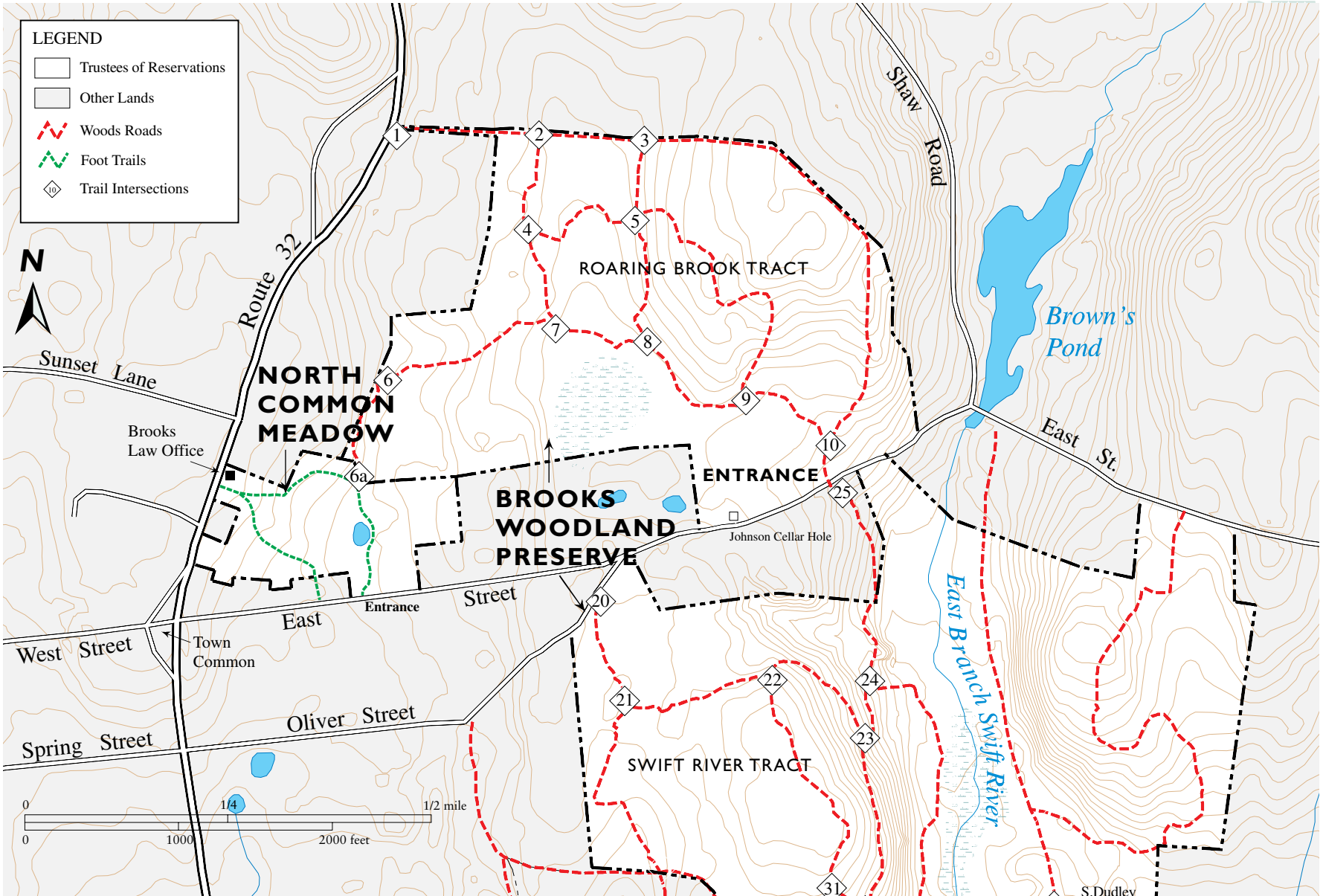
NORTH COMMON MEADOW (25 ACRES)

East Street ▪ Petersham, Massachusetts

978.248.9455 ▪ central@ttor.org ▪ www.thetrustees.org

A PROPERTY OF THE TRUSTEES OF RESERVATIONS

-  HISTORICAL HOUSE / STRUCTURE
-  PICNICKING
-  CROSS-COUNTRY SKIING / SNOWSHOEING
-  HORSEBACK RIDING
-  BIRD WATCHING
-  WALKING / HIKING (EASY)
-  MAP / GUIDE



This map is a product of the Geographic Information System of The Trustees of Reservations. Source data obtained from 1:25,000 scale USGS topographic maps, field surveys, Global Positioning System (GPS), and the Massachusetts Executive Office of Environmental Affairs, MassGIS. Boundary lines and trail locations are approximate. March 2003.