

# Goose Pond Management Plan

## 2009



©

## Goose Pond Basic Management Plan

Location: Lee, MA

Acreage: 112 acres

Completed by: Vincent Antil, Julie Richburg, Will Garrison, Sean Cowhig.

Date: FOC approved, September 24, 2009

### Supporting Reports and Materials:

Trustees Property Guide

Application to the DCR Recreational Trails Grant Program, 2008

### I. Introduction

Goose Pond is a 112 acre property located on the northern shore of Lower Goose Pond in Lee. The property is a heavily wooded hillside, with over a quarter-mile of rocky shore along the pond. Adjacent to the property is a large conservation area owned by the National Park Service; this NPS land provides a corridor through which the Appalachian Trail passes. While the southwestern end of Lower Goose Pond has some shore development, the northern half of the pond and its surrounding area present the visitor with the aspect of a “wild” mountain lake. Currently access is only possible by boat.

- a. Acquisition history: Goose Pond was given to The Trustees by Henry Wilds Smith in 1986. No additions or boundary changes have happened since that time.
- b. Donor’s wishes or other clear guiding principles: None specified.

### II. Summary of Preliminary Management Goals:

Goose Pond should be managed as a “C-level” property. C-type management properties are characterized by low visitation, and modest resource significance and management complexity. Typically, these properties are an important local resource, but will not likely engage a broad range of visitors and volunteers. Goose Pond currently has no official access point or trails. Providing visitors with these services is necessary to meet the standards of a C-level property.

### III. Legal and Management Considerations

Hunting is allowed in season at Goose Pond.

#### IV. Property Description:

##### A. Historic and Cultural Resources

Significant Historic Features: There are no significant historic or cultural features on the property. Historic Resources staff do not feel that a survey needs to be carried out, but ask that staff or volunteers report any cultural features they may come across in the field.

Threats to Historic Features: None

Opportunities: None

##### B. Natural Resources

The reservation is entirely forested with mixed hemlock-hardwoods forest, successional hardwood/mixed oak forest, and northern hardwoods forest. Several rock outcrops/ledge appear on the reservation including along the shoreline of Goose Pond and the steep slopes north and south of the summit.

Significant Natural Features:

- The water body, Lower Goose Pond, is priority habitat for a state-listed fish species, and therefore the reservation serves as an important buffer to the pond itself.
- The reservation includes approximately 2,000 feet of frontage on Lower Goose Pond.
- The entire reservation is designated by the Natural Heritage and Endangered Species Program as Living Waters Supporting Watershed, and the southern portion is BioMap Supporting Natural Land.
- The reservation is adjacent to protected land (NPS AT corridor land) and is part of a large (800 acres) block of undeveloped forest. This provides habitat for some wide ranging mammals such as black bear (which has been observed on the property).
- Several intermittent streams occur on the property, on both the north and south slopes.
- The property is nearly absent of invasive species.

Threats to Natural Features:

- Outlaw trail from nearby Leisure Lee development (trail was flagged and cut). This trail travels near the shoreline and potentially could result in erosion into the pond. There is, however, no sign of ATV use in this area.
- Invasive species. Few invasive species occur on the property at this time, but potential trails could serve as corridors for invasive species spread. Nearby developments and roadways do have invasive plants.
- Hemlock woolly adelgid. Although not currently known to exist on the property, the northern slope includes abundant hemlock which, if killed by the HWA, could change habitats on the reservation currently dominated by

hemlock.

- Global climate change has the potential to significantly alter the ecosystems and natural resources of Massachusetts including changes to the flora and fauna, especially invasive species.

Opportunities:

- Additional ecological assessments are necessary to identify significant species, especially those plants that could occur on ledges and outcrops, along intermittent streams or seeps; and bird species (interior forest species).
- More than half of the shoreline of Lower Goose Pond is impacted to some extent by development. The reservation therefore provides important habitat on Lower Goose Pond for odonates and other species requiring undisturbed or minimally disturbed shoreline.
- Implementing a program of early detection and rapid response to new exotic invasive species will reduce the potential of these species becoming established, especially if hemlocks decline due to the hemlock woolly adelgid.

C. Scenic Resources

Significant Scenic Features: The property provides views of Lower Goose Pond from the shore, as well as presenting an undeveloped shoreline to boaters on the pond.

Threats to Scenic Features: None

Opportunities:

- New trails should provide an area from where visitors may view Goose Pond.

D. Structural Resources

There are no structural features on the property.

Threats to Structural Resources: None

E. Visitor Services and Engagement:

Currently Goose Pond has no official public access or trails. Current access is by boat or through an unofficial trail used by neighbors. A project is planned for 2009 which will provide these services. An entrance and parking area will be located on Lee Land Trust property on Route 20, about 1,200 feet (.2 miles) from The Trustees property. A hiking trail will be cut through Lee Land Trust property to Goose Pond. The final route and distance of the trail is still to be determined. A grant from the Mass. DCR trails program will pay for some trail design and hardscaping by a consultant. Volunteer labor will also come from the Lee Land Trust. Continued partnership with the Lee Land Trust will provide opportunity for future volunteer stewardship.

Service:	Does it Exist?	Specific Description: age, condition, actively updated?
1. Approach signs that lead visitors to the property	N	Planned
2. Entrance and trailhead signs.	N	Planned
3. Kiosk or Bulletin Board meets standards.	N	Planned
4. Up-to-date Map on bulletin board and website.	N	Planned
5. Trails are clearly marked	N	Planned
6. Adequate parking area.	N	Planned
7. Interpretive Program.	N	None planned. Possible public event (re-opening) after trail /access project is complete.

V. Current Resources Available for Management

a. Staff and Volunteers

The Stockbridge Management Unit covers 11 properties and over 2,500 acres. There are 6 full-time staff (including the Bartholomew's Cobble ranger and a horticulturalist) There are also 2 seasonal maintenance positions. Management HQ is in Stockbridge, 8 miles away. Approximately 1% of the unit's staff time is allocated to Goose Pond. Currently, there is no volunteer steward for the property.

b. Equipment

The Stockbridge Unit has: 3 pickup trucks, 1 dump truck, 1 tractor w/ bucket-loader. The unit has no chipper.

c. Operating budget

Full FY10 operating budget for the Stockbridge unit \$ 259,000 (includes staff). Goose Pond has no budgeted expenses.

d. Other (partners, etc.)

The Lee Land Trust will be partnering on the 2009 trail access project. We hope to develop some permanent volunteer capacity for Goose Pond through them.

VI. Recommended One-time Actions

Rec#	Type	Resource Protection Action	Description/ Rationale	Phase	Rank	1' staff	2' staff	Phase 1	Phase 2	Phase 3	Total	Vol.	Total Phase 1	Total Phase 2	Total Phase 3	Total Plan Costs all Phases	Budget Source	Operating	Supplemental	Capital	Targetted Funding Source	Notes	Status
								Staff	Staff	Staff	Plan	Op?	Costs	Costs	Costs								
								hours	hours	hours	Staff												
											Needs												
1	GM	Planning new property access	Coordinate with Lee Land Trust. Future access and parking will be through their property.	1	N	S		180			180		\$2,000	\$0	\$0	\$2,000	O	\$2,000				Application has been submitted to the state DCR Recreational Trails Grant to fund effort.	IP
2	GM	Create New Trail	New trails must be layed out, out and blazed. Hired contractor may lead construction and focus on hardscaping. Volunteer labor will be used where possible.	1	N	S	EC	100			100		\$2,500	\$0	\$0	\$2,500	O	\$2,500				Project will proceed without contractor if DCR Grant funding is not available. Project will require about 200 hours of volunteer hours.	NS
3	GM	Install new bulletin board.	Current bulletin board does not meet Trustees standards.	1	N	S	E&O	40			40		\$1,000	\$0	\$0	\$1,000	O	\$1,000					NS
4	GM	Install Parking Area (6 cars)	Parking area on Lee Land Trust property. The Trustees offer to provide grading of site.	1	N	S		16					\$300	\$0	\$0	\$300	O	\$300				Most of the work will be done by Lee Land Trust.	NS
5	GM	Close outlaw trail.	Informal trail has been flagged near shoreline.	1	N	S		4			4		\$0	\$0	\$0	\$0		\$0				Some contact with neighbors may be warranted.	
6	NR	Additional ecological inventory	Plant inventory Breeding Bird Survey	2	N	EC			20		20		\$0	\$0	\$0	\$0		\$0				Include plant species and breeding birds	NS
7	NR	Ecological survey of shoreline.		2	N	EC			4		4		\$0	\$0	\$0	\$0		\$0				Special emphasis on Odonates	
8	GM	Approach signs		3	N	S				8	8		\$0	\$0	\$200	\$200		\$200					NS
<b>TOTAL</b>								340	24	8	356		\$5,800	\$0	\$200	\$6,000		\$6,000					

**Key (for Recommended One-Time Actions):**

Type: GM – General Management, NR – Natural Resource Management, VM - Visitor Management  
 Phase: 1 – 2009 through 2011, 2 – 2012 through 2014, 3 – 2015 through 2017  
 Rank: N – Needed, D - Desired  
 Staff: DSR – Director of Structural Resources, EC – Ecologist, LC – Land Conservation, E&O – Ed. & Outreach Publications  
 S - Superintendent  
 Budget Source: N – Not Applicable, O – Operating  
 Status: IP – In Progress, NS – Not Started

VII. Routine Management Program

Line #	Task	Action Type	Acceptable Performance Level (APL)	Acceptable Frequency	Less than annual	Season	Who?	Volunteer Opp?	Total hours needed to reach APL	Add'l funds needed to reach APL	Notes
1	Property Visit	GM	Adequate	monthly	no	W, S, Su, F	S	yes	48	\$100	Inspect signs, stock kiosk, pick-up trash, check trail conditions.
2	Monitor for Invasive Species	GM	Adequate	4 times a year	no	S,Su,F	S	yes	4		Include Hemlock Woolly Adelgid in Fall.
3	Inspect Boundaries	GM	Adequate	Every 5 years	yes	W, S	S	yes	4		
<b>TOTAL</b>									56	\$100	

**Key:**

Action Type: GM – General Property Management, NR – Natural Resources Management  
 Who?: EC – Ecologist, S - Superintendent  
 Performance Level: Adequate - The task is currently completed at a level that does not hinder resource protection or the visitor experience.  
 Strong - The task is completed in a manner/at a frequency that represents the ideal.

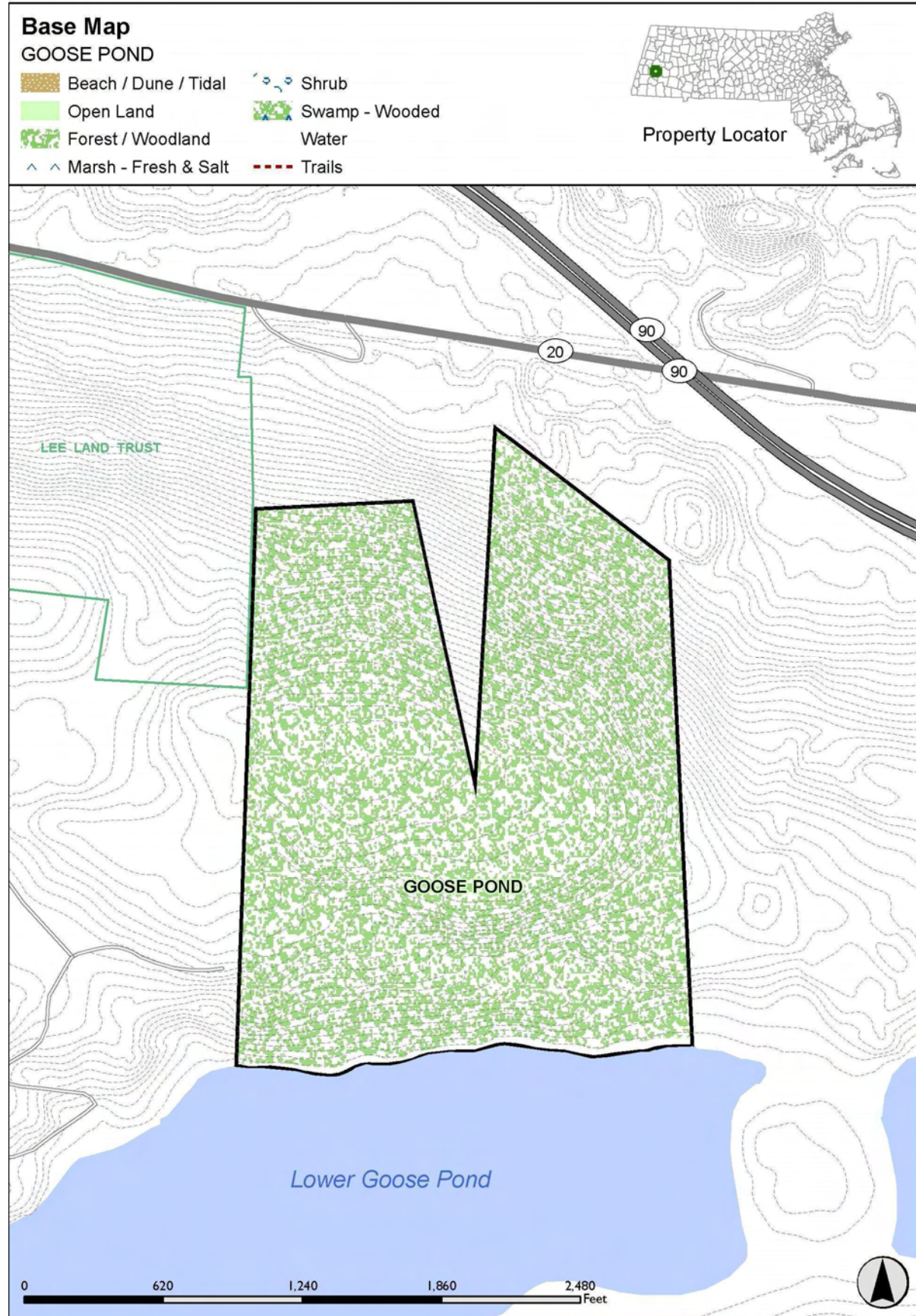
VIII. Conclusions

Currently Goose Pond has no official public access or trails. A project is planned which will provide these services. This project will be completed in partnership with the Lee Land Trust. Continued partnership with the Lee Land Trust will provide opportunity for volunteer stewardship. With a volunteer steward, no significant increase in regular staff time will be required to maintain adequate routine management.

IX. Monitoring and Review

Property plan should be reviewed annually by staff to ensure progress is being made to complete the recommendations. Future plan revisions may require additional research and field work.

# APPENDIX A: Base Map



# APPENDIX B: Natural Heritage & Endangered Species Program (NHESP) Resources Map



# APPENDIX C: Open Space Context Map

